

□ =half step

# Major Scale Chart

A major scale



B major scale



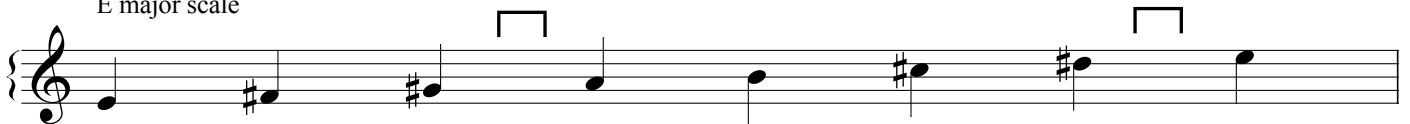
C major scale



D major scale



E major scale



F major scale



G major scale



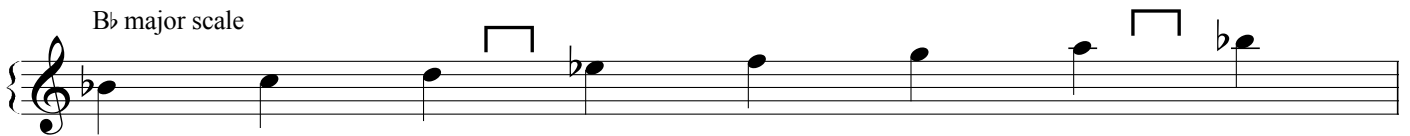
go to next page for flat keys...

# Major Scale Chart (flat keys)

A $\flat$  major scale



B $\flat$  major scale



D $\flat$  major scale



E $\flat$  major scale



G $\flat$  major scale

